

IPPS CONFERENCE 2023

- ▶ COMPILED BY: SIXOLILE HOBONGWANA
- ▶ KWELERA NATIONAL BOTANICAL GARDEN EAST LONDON EASTERN CAPE
- ▶ TOPIC: KWELERA NBG HAPPENINGS AND DEVELOPMENTS



INTRODUCTION

- ▶ The name Kwelera comes from the Khoi language and means the place of many Aloes.
- ▶ The Kwelera National Botanical Garden was declared in 2014 and officially opened by the Department of Environmental Affairs Minister in August 2015.
- ▶ The National Botanical Garden is SA's 10th National Botanical Garden & the first to be established in Eastern Cape.
- ▶ It is the first National Botanical Garden in the country to be managed jointly by two agencies, Eastern Cape Parks and Tourism Agency (ECPTA) and the South African National Biodiversity Institute (SANBI).
- ▶ The Botanical Garden is officially classified as a conservation garden, promoting biodiversity education to locals and attracting tourists to the region.

INTRODUCTION

- ▶ Kwelera is the 170 hectares between the Gonubie and Kwelera rivers, 20 kilometers Northeast of East London in the Eastern Cape.
- ▶ The Kwelera nature reserve is a coastal forest reserve in the Wild Coast region of the Eastern Cape.
- ▶ The 10-hectare National Botanical Garden is part of the nature reserve.
- ▶ The Kwelera National Botanical Garden is currently being developed and not yet open to the public.

A picture of the 10 hectare land where the garden is being established.



A picture of the garden office before SANBI



Picture of the garden office after SANBI



Picture of office today



CURRENT HAPPENINGS AT KWELERA NBG

▶ PLANT COLLECTIONS

- Procedure for field trips and plant collection
- Who does plant collections
- How we collect plants

▶ PLANT PROPAGATIONS

- Methods of propagation we use
- Propagation procedures (propagation, transplanting, hardening-off)
- Propagation facilities used
- Important details documented on plants

▶ NATIONAL BOTANICAL GARDEN DEVELOPMENTS

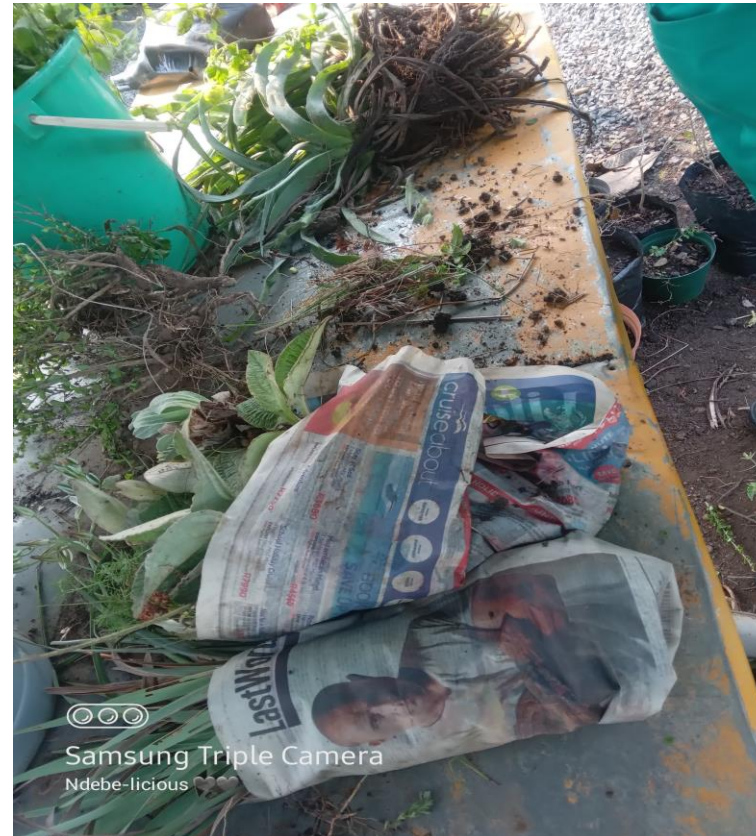
- Building and development of the 10-hectare Kwelelera National Botanical Garden

CURRENT HAPPENINGS AT KWELERA NBG

▶ PLANT COLLECTIONS.

- Approval and justification
- Pre trip arrangements
 - Organiser
 - Participants
 - Duration of the trip
 - Area being visited
 - Timing (weather conditions, occurrences etc.)
 - Permits.
- Every willing person in the garden under guidance is allowed to participate in plant collecting.
- Collect plants following basic rules and laws.

Plant collection trip



Seed collections



Plant collections

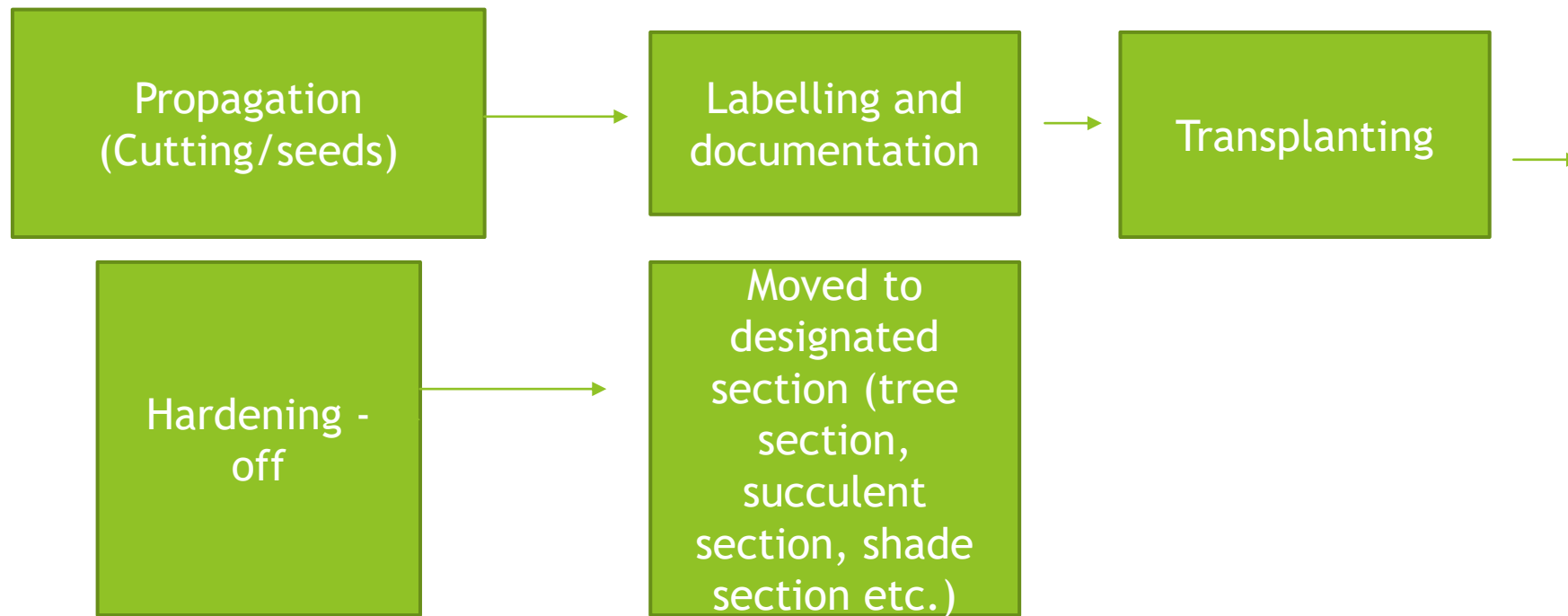


Plant propagations

- ▶ We propagate plants using cuttings and seed.



Plant propagation



Propagation procedure



Propagation log

Name	...
Species	...
Date	...
Propagation method	...
Propagation media	...
Propagation results	...
Notes	...



Nursery facilities



Nursery Layout



Current developments at Kwelera NBG

- ▶ Phase one, well under way at the 10 hectare.
- ▶ The garden has many living plant collections ready for the botanical garden.
- ▶ Extending the nursery for more space to accommodate more plants.



Objectives of establishing the garden

- ▶ To display extraordinary biological and cultural diversity of the EC.
- ▶ To encourage communities to explore, learn ,appreciate and become custodians for the natural environment.
- ▶ To provide an ever-changing mix of activities for the widest possible audience.
- ▶ To provide environmental education to the surrounding schools and communities.
- ▶ To create and provide conservation education and awareness.

Horts make a plan



Horts make a plan



❖ FUN FACT 

▶ THANK YOU!!